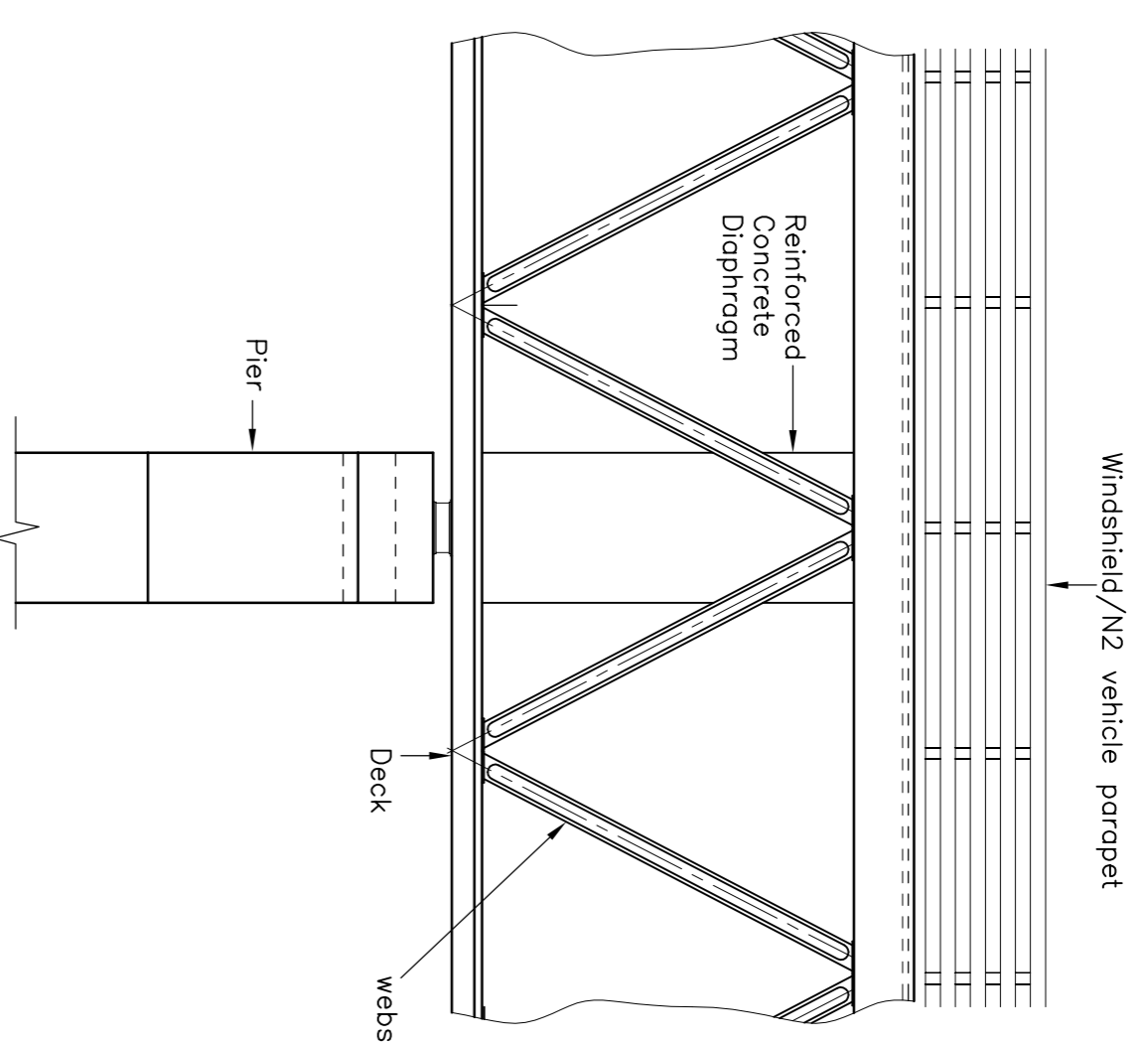
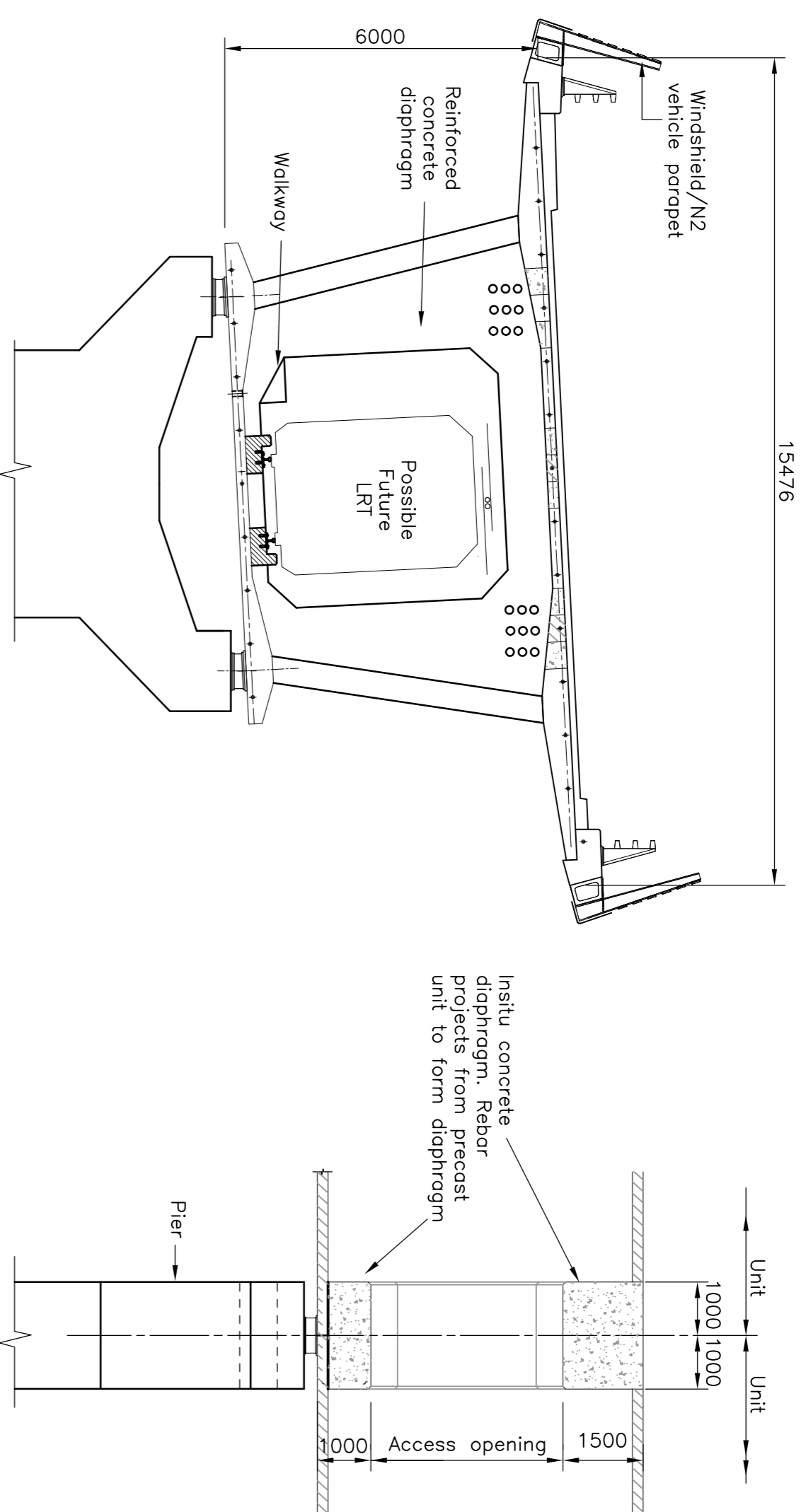


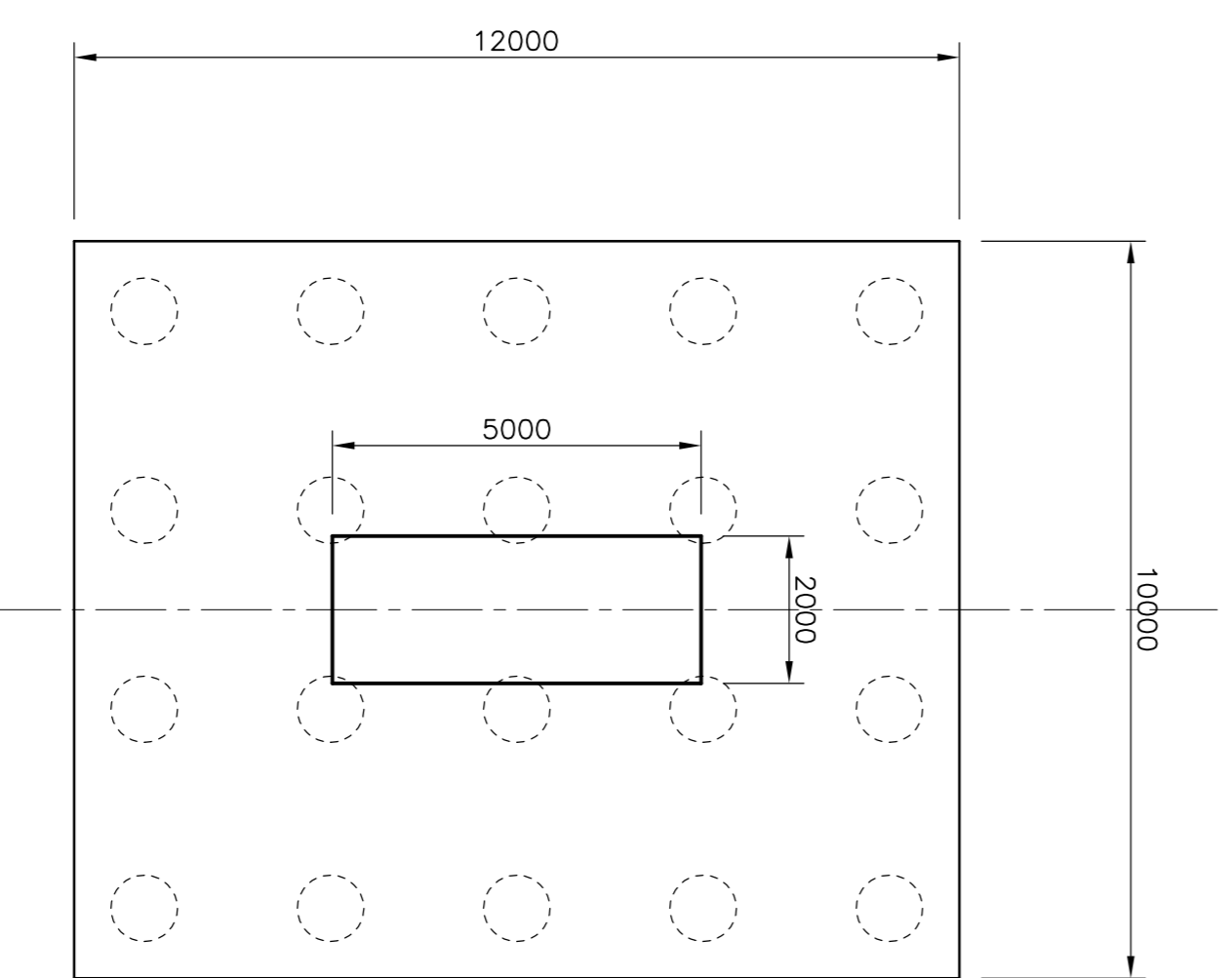
NOTES
 1. For general notes refer to drawing number B4027/4/B/PL/800



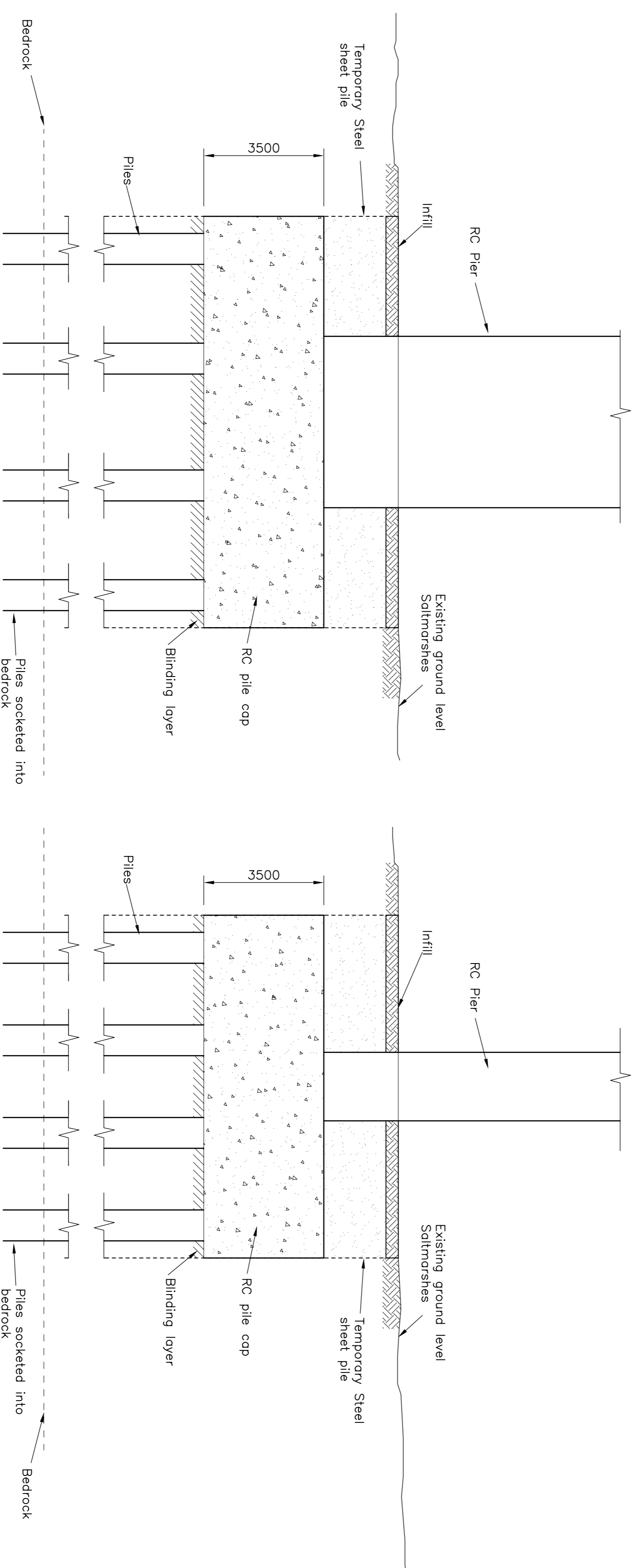
PART EXTERNAL ELEVATION AT PIER POSITION
 Scale 1:100



TYPICAL CROSS SECTION THROUGH DECK AT PIER
 Scale 1:100



TYPICAL PLAN OF PIER BASE
 Scale 1:100



TYPICAL CROSS SECTION THROUGH PIER BASE
 Scale 1:100

Rev.	1	LL	PLANNING DIRECTION
Drawn	LL	PH	
Chkd.	SWJ		
Apprvd	SWJ		
Date	15.03.08		

Client: PLANNING DIRECTION

Project: **THE RIVER MERSEY (MERSEY GATEWAY BRIDGE) ORDER**

Drawing Title: **PLANNING DIRECTION MERSEY GATEWAY BRIDGE APPROACH PIERS GENERAL ARRANGEMENT SHEET 3 OF 4**

Gifford

20 Nicholas Street, Chester, CH1 2NX Tel: 01244 31955 Fax: 01244 31959 www.gifford.com	Scale (at A1) As Shown	Date DEC 2007	Drawn LL
---	------------------------	---------------	----------

Dwg. no. B4027/4/B/PL/802	Rev. -
---------------------------	--------

10 0 10 20 50 100mm NATURAL SCALE

ORIGINAL DRAWING SIZE 841 x 594

This map is reproduced from Ordnance Survey material with the permission of Ordnance Survey on behalf of the Controller of Her Majesty's Stationery Office. Crown copyright. Unauthorised reproduction of this map in any form or by any means without the prior written permission of Ordnance Survey is prohibited. Licence No. 100018542 2007. Warrington Borough Council Licence No. LA079898 2002.