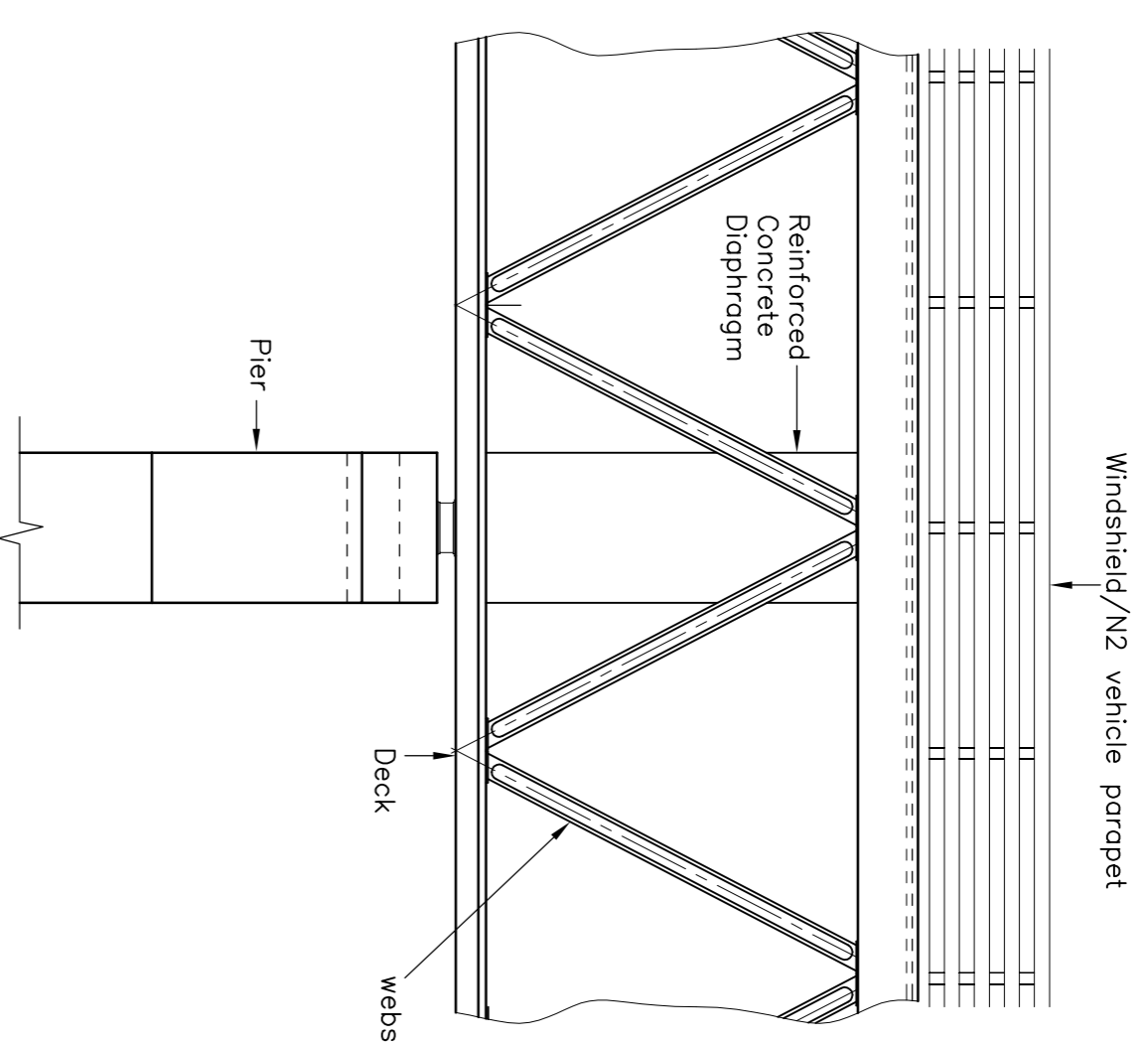
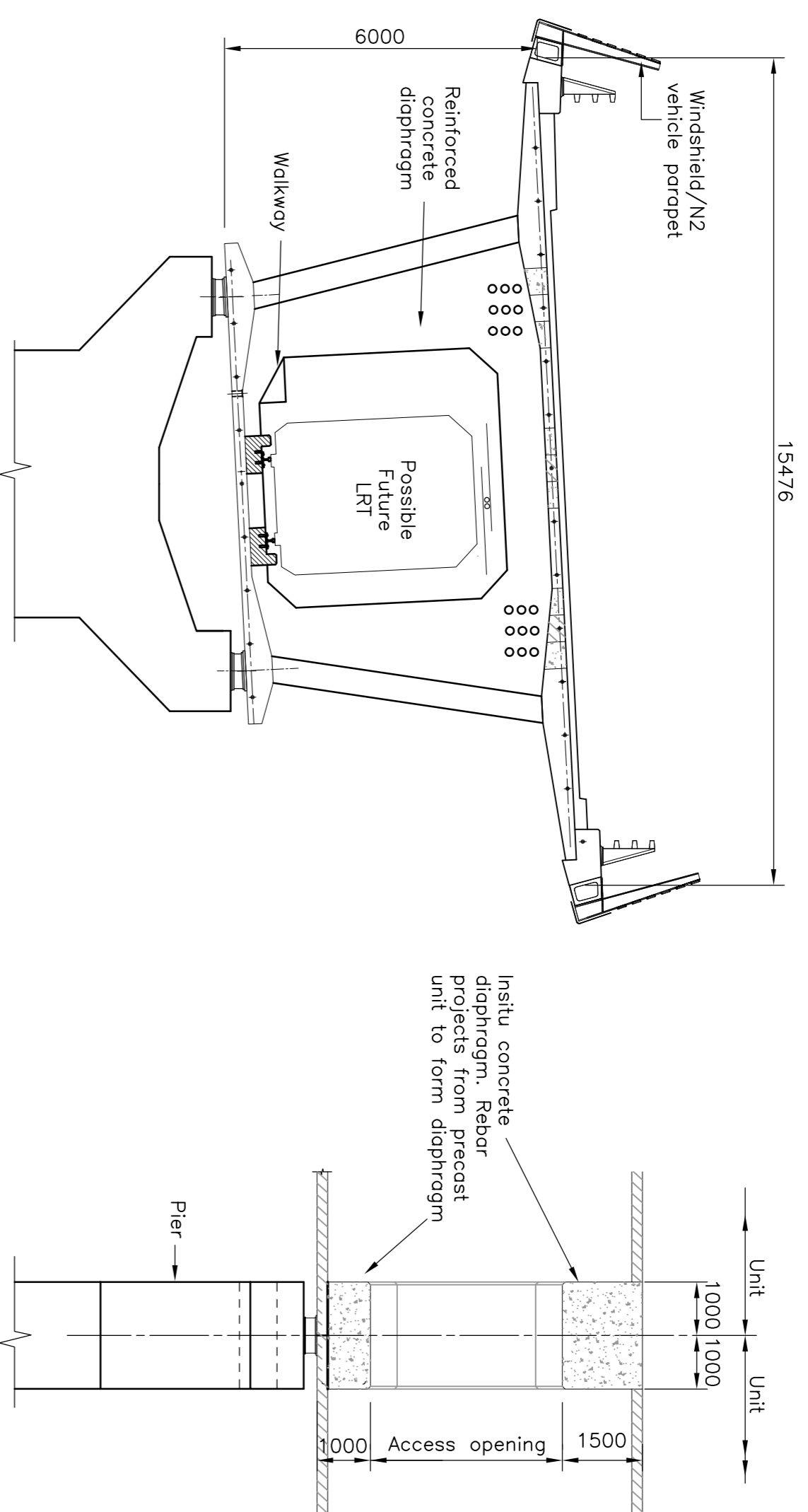


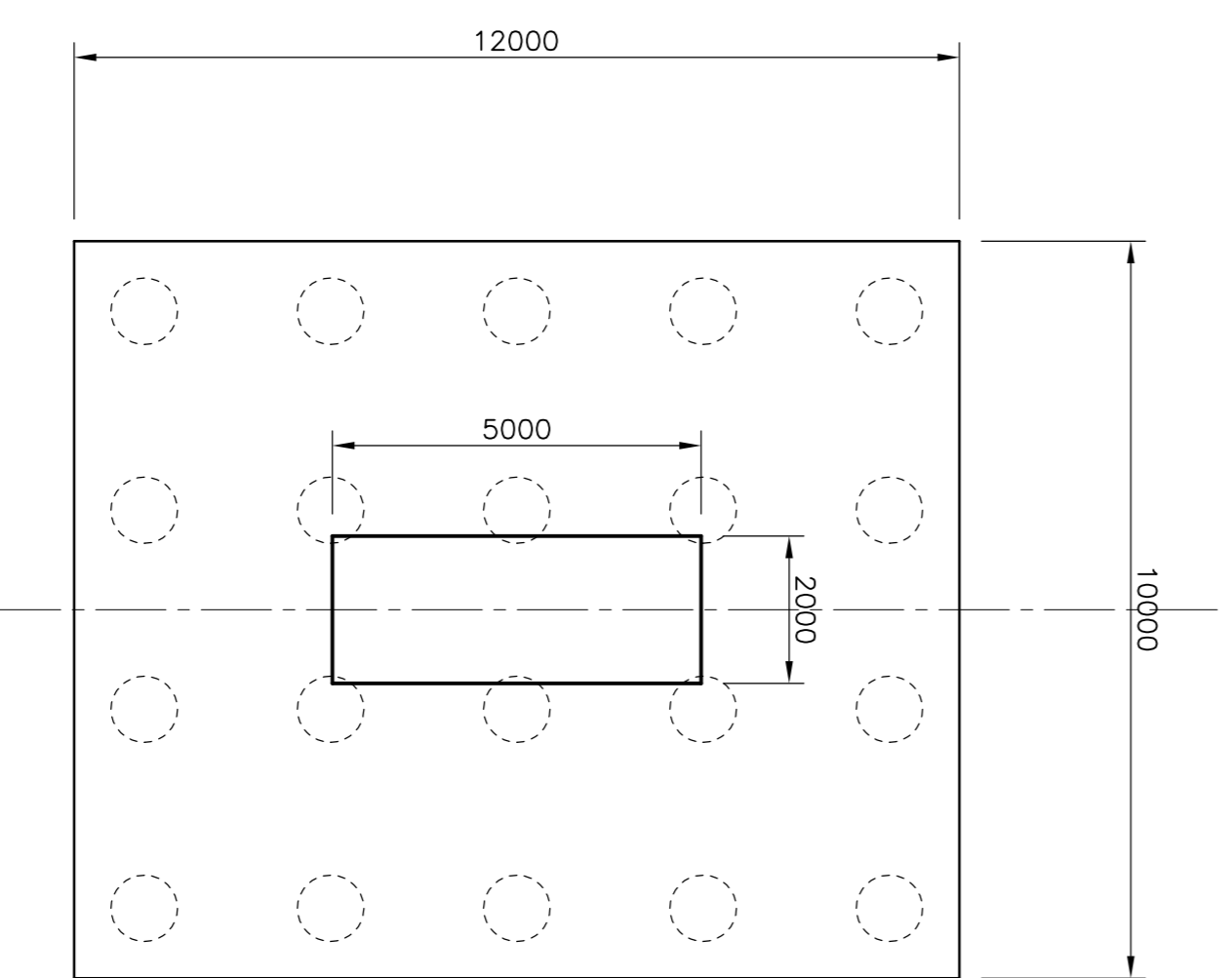
**NOTES**  
 1. For general notes refer to drawing number B4027/4/B/PL/800



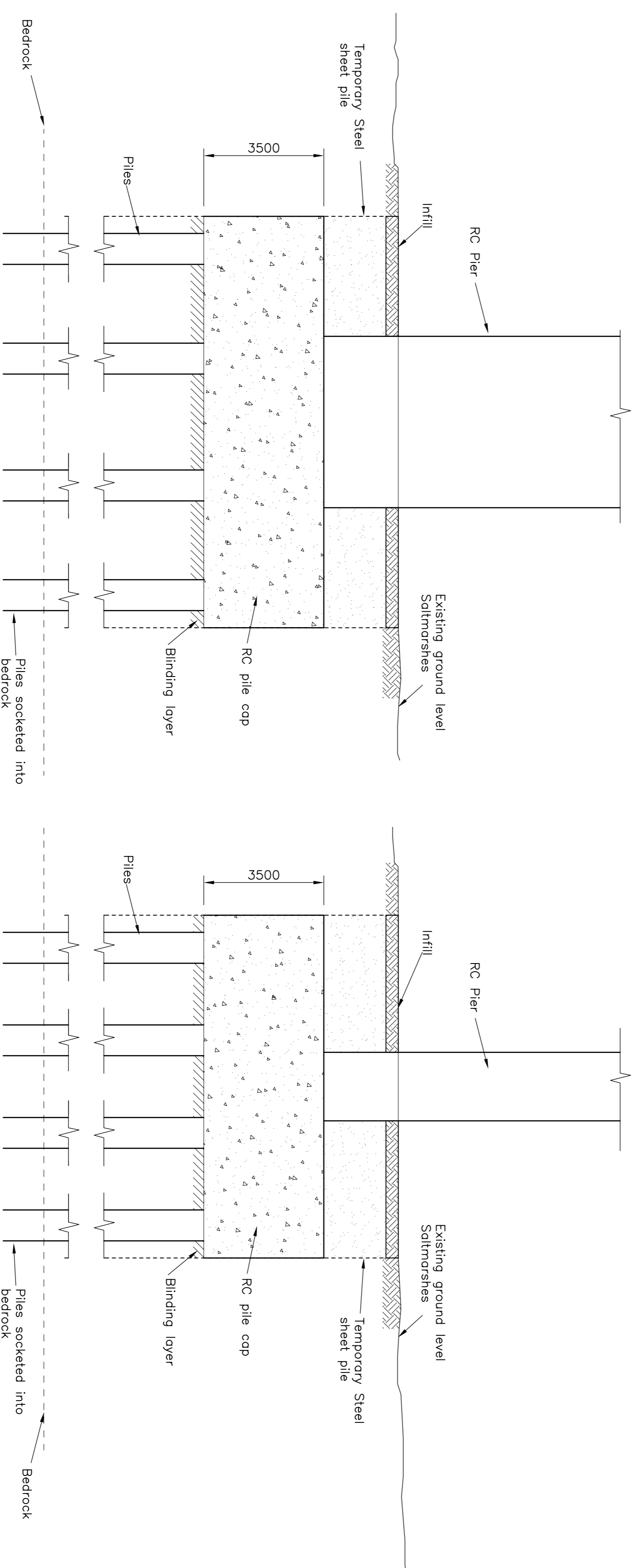
**PART EXTERNAL ELEVATION AT PIER POSITION**  
 Scale 1:100



**TYPICAL CROSS SECTION THROUGH DECK AT PIER**  
 Scale 1:100



**TYPICAL PLAN OF PIER BASE**  
 Scale 1:100



**TYPICAL CROSS SECTION THROUGH PIER BASE**  
 Scale 1:100

Rev.	1	PLANNING APPLICATION
Drawn	LL	
Chkd.	PH	
Apprvd	SWJ	
Date	15.03.08	

Client: **the mersey gateway**  
 A BRIDGE TO PROSPERITY  
**Northwest**  
 REGIONAL DEVELOPMENT AGENCY

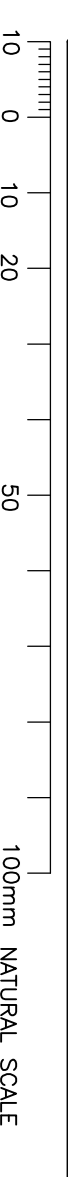
Project: **THE MERSEY GATEWAY**  
 Drawing Title: **MERSEY GATEWAY BRIDGE APPROACH PIERS GENERAL ARRANGEMENT PLANNING SHEET 3 OF 4**

**Gifford**

20 Nicholas Street, Chester, CH1 2NX Tel: 01244 31955 Fax: 01244 31959 www.gifford.com	Scale (at A1) As Shown	Date DEC 2007	Drawn LL
--	---------------------------	------------------	-------------

Dwg. no. **B4027/4/B/PL/802**  
 Rev. -

This map is reproduced from Ordnance Survey material with the permission of Ordnance Survey on behalf of the Controller of Her Majesty's Stationery Office © Crown copyright. Unauthorised reproduction of this map in any form or by any means without the permission in writing from Ordnance Survey is prohibited. Licence No. 100018542 2007. Warrington Borough Council Licence No. LA079898 2002.



ORIGINAL DRAWING SIZE 841 x 594