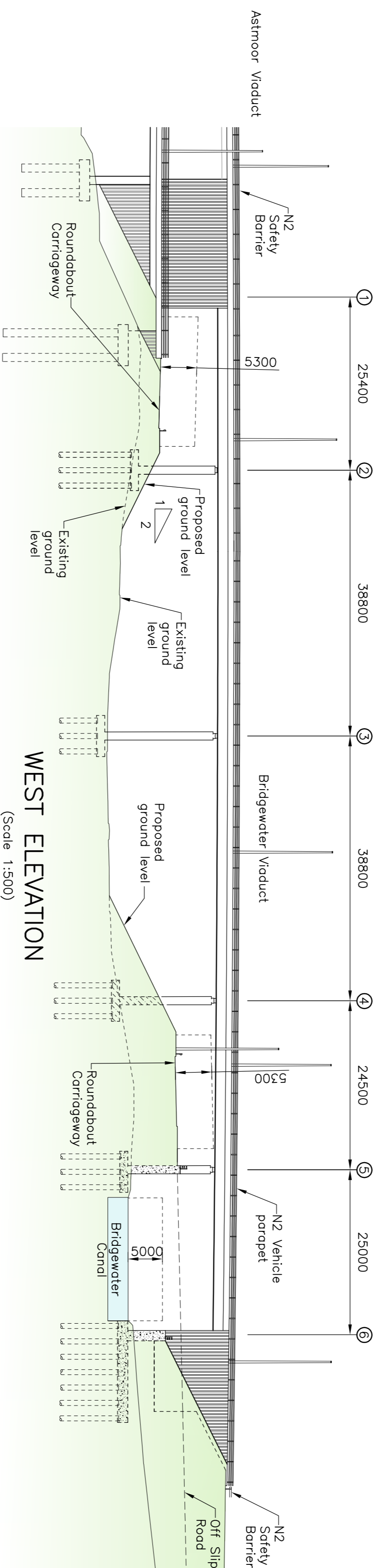
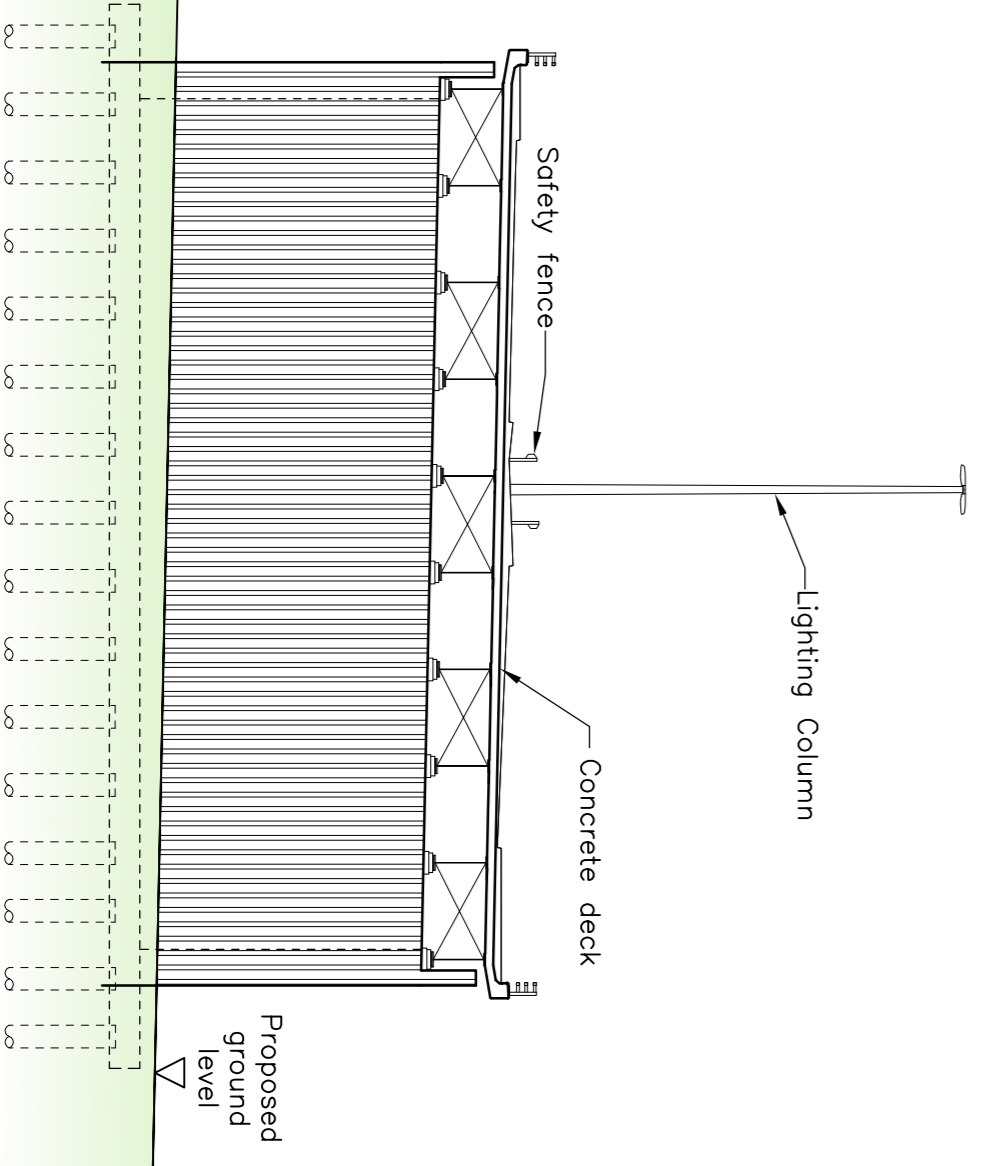


PLAN
(Scale 1:500)

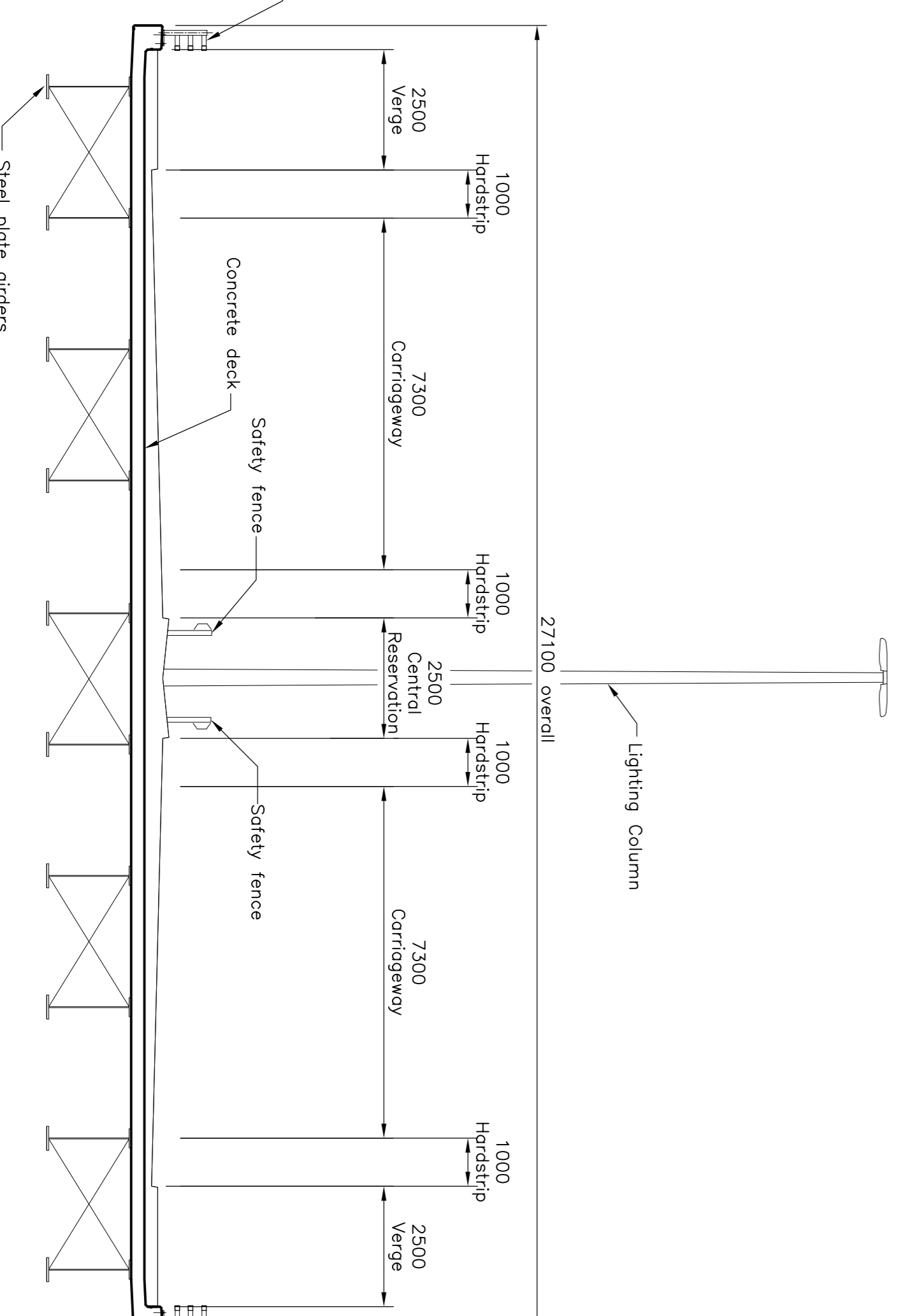


WEST ELEVATION
(Scale 1:500)

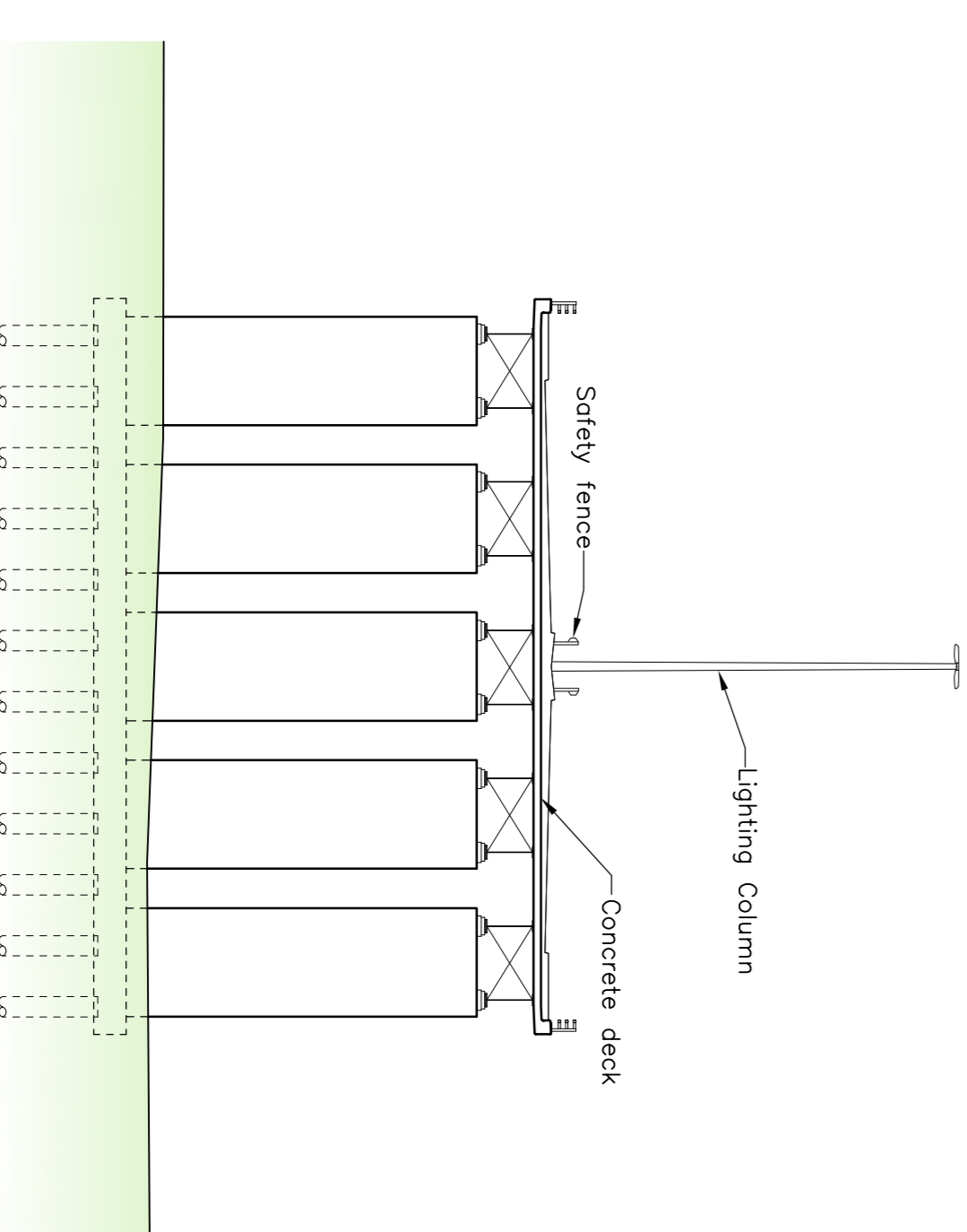
Geotechnical Information		
Description	Depth (b.g.l.)	SPT 'N' Values
Mode ground	0-3m	
Glacial deposits	3-12m	
Sherwood Sandstone	> 12m	>50m (Bedrock)



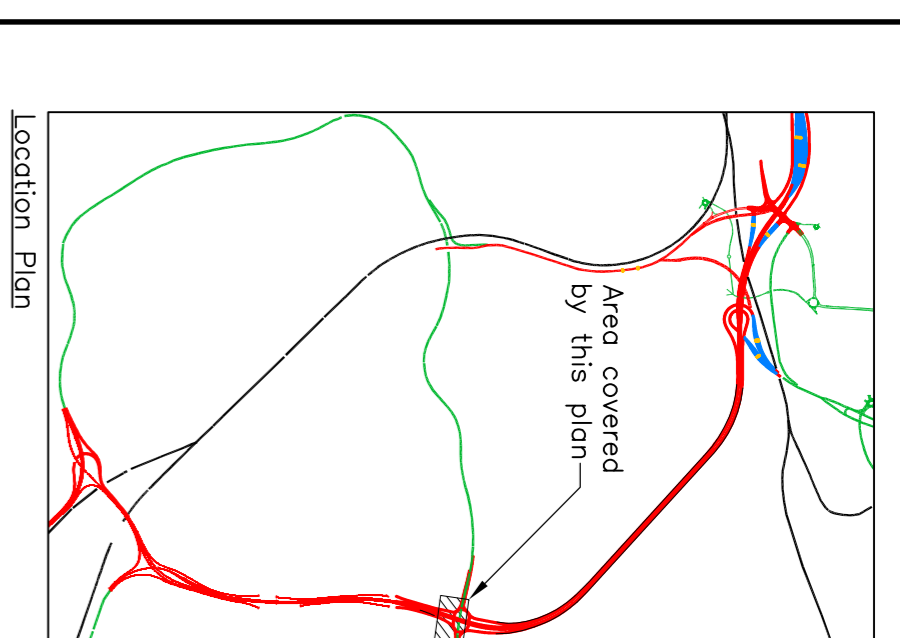
SECTION C-C
(Scale 1:250)



TYPICAL SECTION B-B
(Scale 1:100)



TYPICAL ELEVATION ON COLUMNS
(Scale 1:250)



NOTES

- All dimensions shown are in millimetres unless noted otherwise.
- All levels are in metres above ordnance datum (m A.O.D.) unless noted otherwise.
- Structure is a 2 span continuous bridge of prestressed concrete beams.
- Piled foundations indicated as geotechnical information confirms that bedrock is at considerable depth.
- Geotechnical information taken from Form 'C' using latest B.H. information.
- Parapets to be normal containment (N2) vehicle parapets in accordance with T.D./19.
- Bridge deck surface and subsurface water drainage to be combined kerb/drain system and through decks.
- Abutment back of wall drainage to consist of drainage layer and 150 diameter porous pipework connected into highway drainage via a rodable closed system.
- All exposed vertical concrete surfaces to receive a patterned profile finish with 50mm deep vertical feature grooves at 160mm centres.
- Scheme lighting to be 15 metre high masts as indicated by Halton Borough Council design.

Rev.	Description
A	PLANNING DIRECTION Amendments
Drawn	BAH
Chkd.	AJR
Apprvd.	SWJ
Date	21.05.08



Project
THE RIVER MERSEY (MERSEY GATEWAY BRIDGE) ORDER

Drawing Title
PLANNING DIRECTION BRIDGEWATER VIADUCT GENERAL ARRANGEMENT



20 Nicholas Street, Chester, CH1 2NX
Tel: 01244 31855 Fax: 01244 31859 www.gifford.com

Scale (at A1)	Date	Drawn	DE
As Shown	NOV 07		

Dwg. no.	Rev.
B4027/4/B/PL/1000	A

This map is reproduced from Ordnance Survey material with the permission of Ordnance Survey on behalf of the Controller of Her Majesty's Stationery Office. Copyright, Unauthorized reproduction is prohibited. Ordnance Survey Licence No. 100018562 2007. Warrington Borough Council Licence No. U673889 2002.

