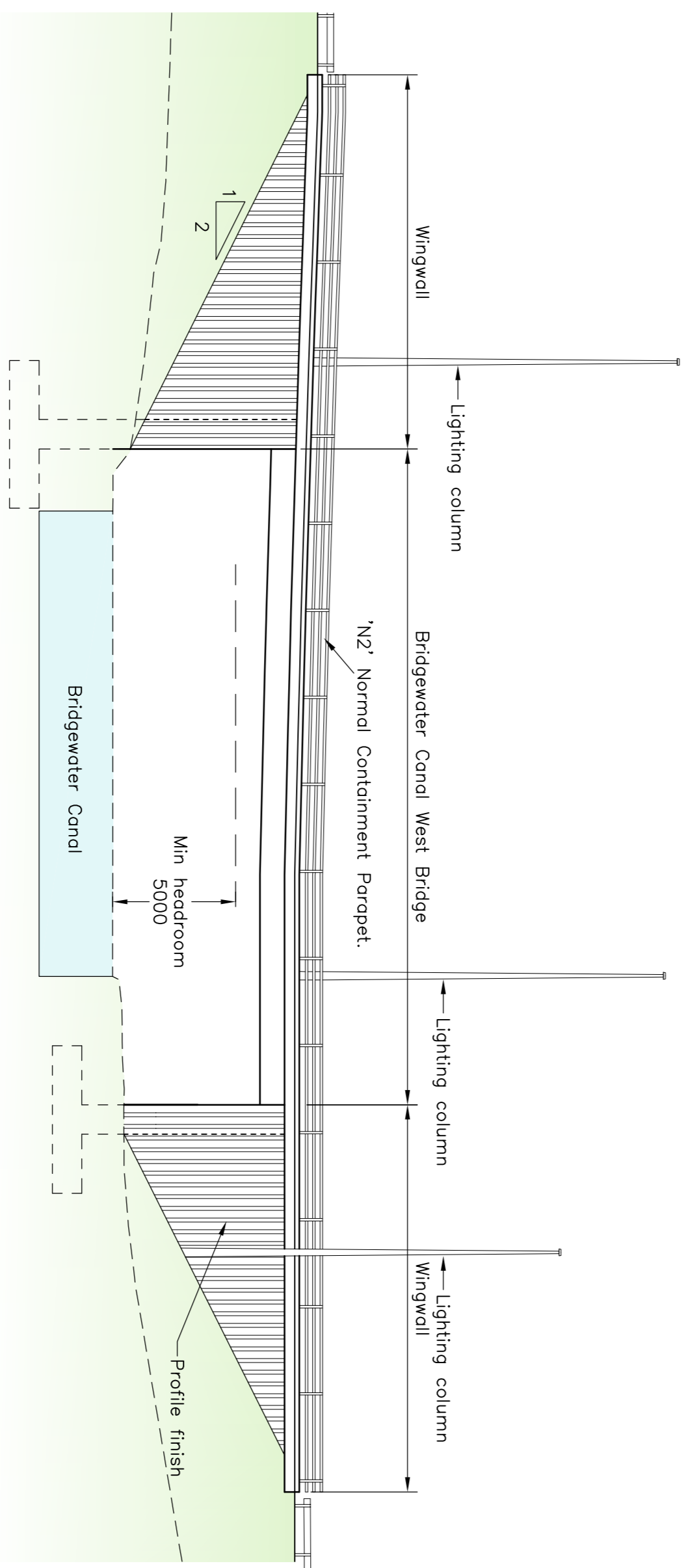
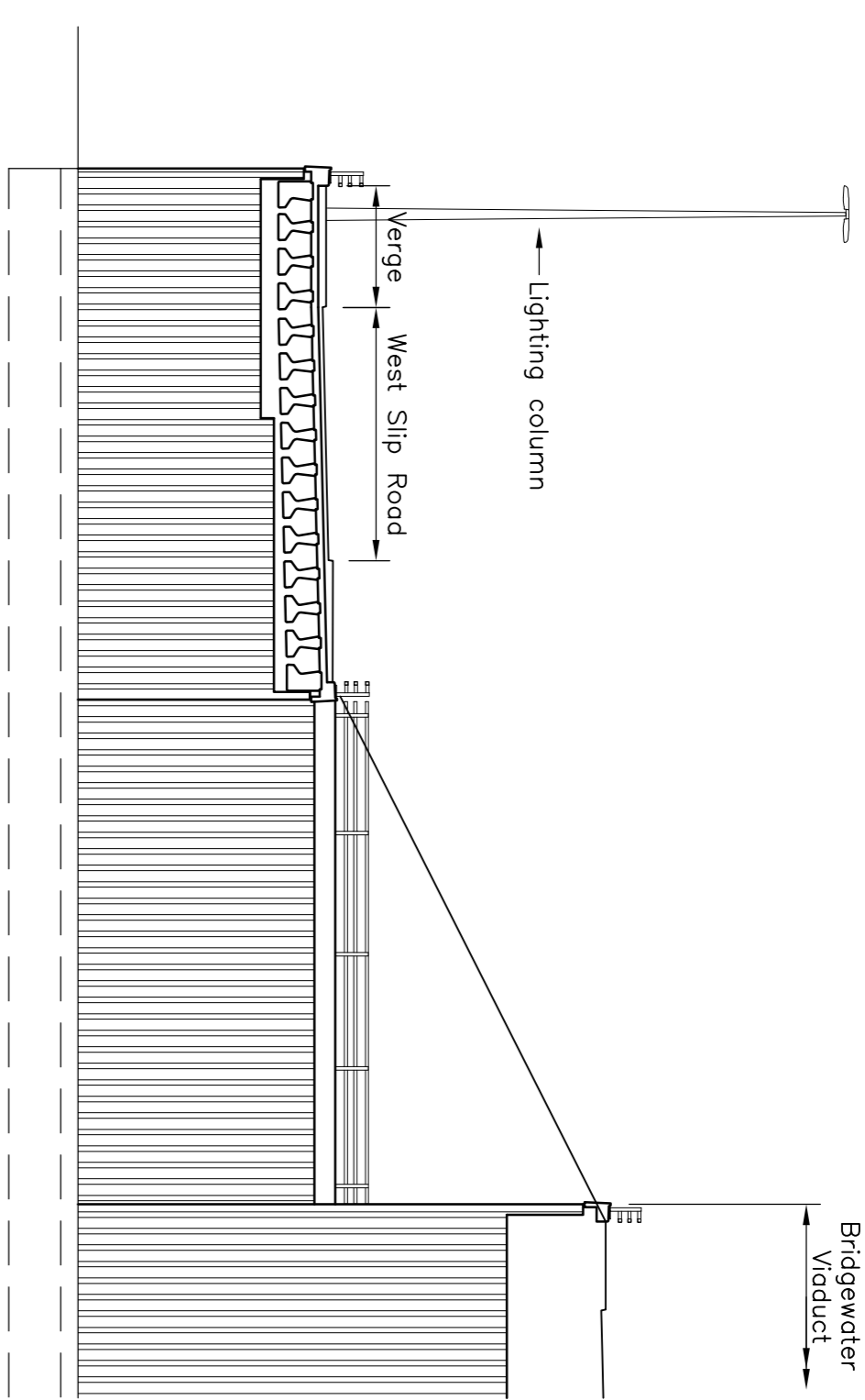


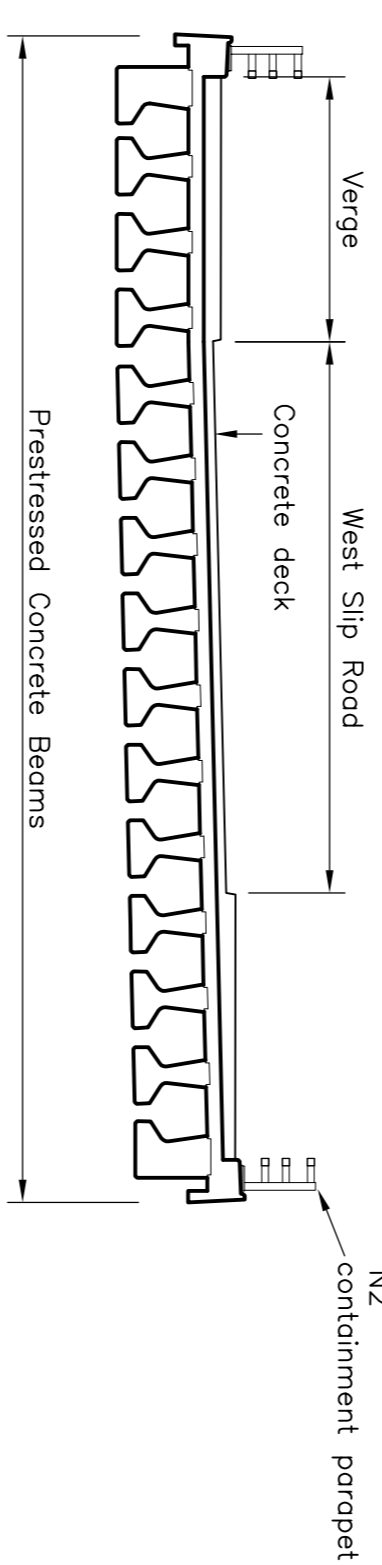
PLAN  
(Scale 1:200)



ELEVATION C-C  
(Scale 1:200)



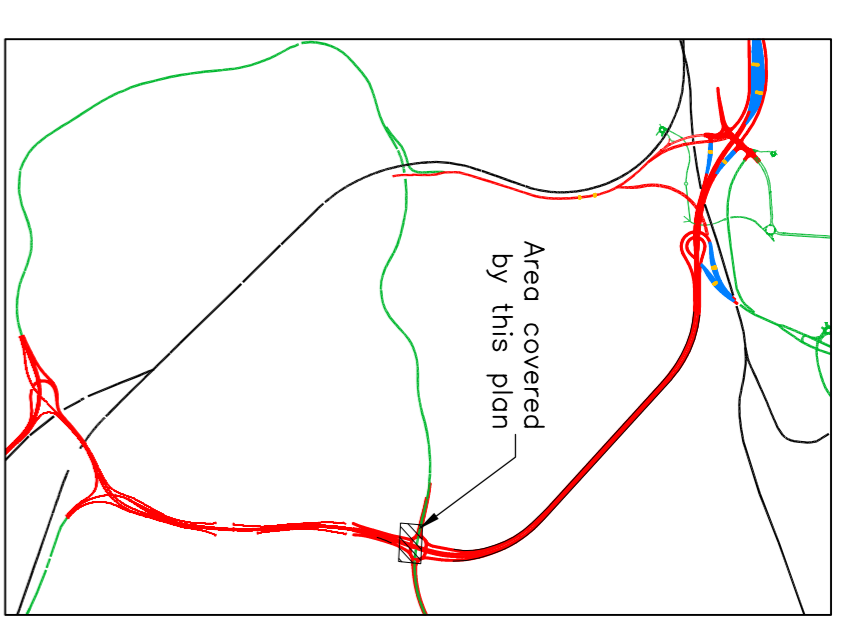
ELEVATION A-A  
(Scale 1:250)



SECTION B-B  
(Scale 1:250)

Geotechnical Information		
Description	Depth (b.g.l.)	SPT 'N' Values
Moist ground	0-3m	
Glacial Till	3-7m	7-48 (Clay)
Sandstone	>7m	>50 (Bedrock)

NOTES



- All dimensions shown are in millimetres unless noted otherwise.
- All levels are in metres above ordance datum (m A.O.D.) unless noted otherwise.
- Structure is a 2 span continuous bridge of prestressed concrete beams.
- Piled foundations indicated as geotechnical information confirms that bedrock is at considerable depth.
- Geotechnical information taken from Form 'C' using latest B.H. information.
- Parapets to be normal containment (N2) vehicle parapets in accordance with T.D./19.
- Bridge deck surface and subsurface water drainage to be combined kerb/drain system and through decks.
- Abutment back of wall drainage to consist of drainage layer and 150 diameter porous pipework connected into highway drainage via a roadable closed system.
- All exposed vertical concrete surfaces to receive a patterned profile finish with 50mm deep vertical feature grooves at 150mm centres.
- Scheme lighting to be 15 metre high masts as indicated by Halton Borough Council design.

Rev.	Drawn	Chkd.	Apprvd.	Date	Description
1	DJ	PH	SWJ	15.03.08	PLANNING APPLICATION
A	BAH	AJR	SWJ	21.05.08	PLANNING DIRECTION Amendments



Project  
**THE RIVER MERSEY (MERSEY GATEWAY BRIDGE) ORDER**

Drawing Title  
**PLANNING DIRECTION BRIDGewater CANAL WEST BRIDGE GENERAL ARRANGEMENT**



20 Nibley Street, Chester, CH1 2HX  
Tel: 01244 31865 Fax: 01244 31460 www.gifford.co.uk  
Scale (cf. A1) As Shown Date DEC 07 Drawn DJ

Dwg. no. **B4027/4/B/PL/1100** Rev. **A**

This map is reproduced from Ordnance Survey material with the permission of Ordnance Survey on behalf of the Controller of Her Majesty's Stationary Office © Crown copyright. Unauthorised reproduction of this map in any form without the permission of Ordnance Survey is prohibited. Licence No. 100019288. Ordnance Survey Licence No. 100019288. Ordnance Survey Licence No. 100019288.